

State of Wyoming Corner Record

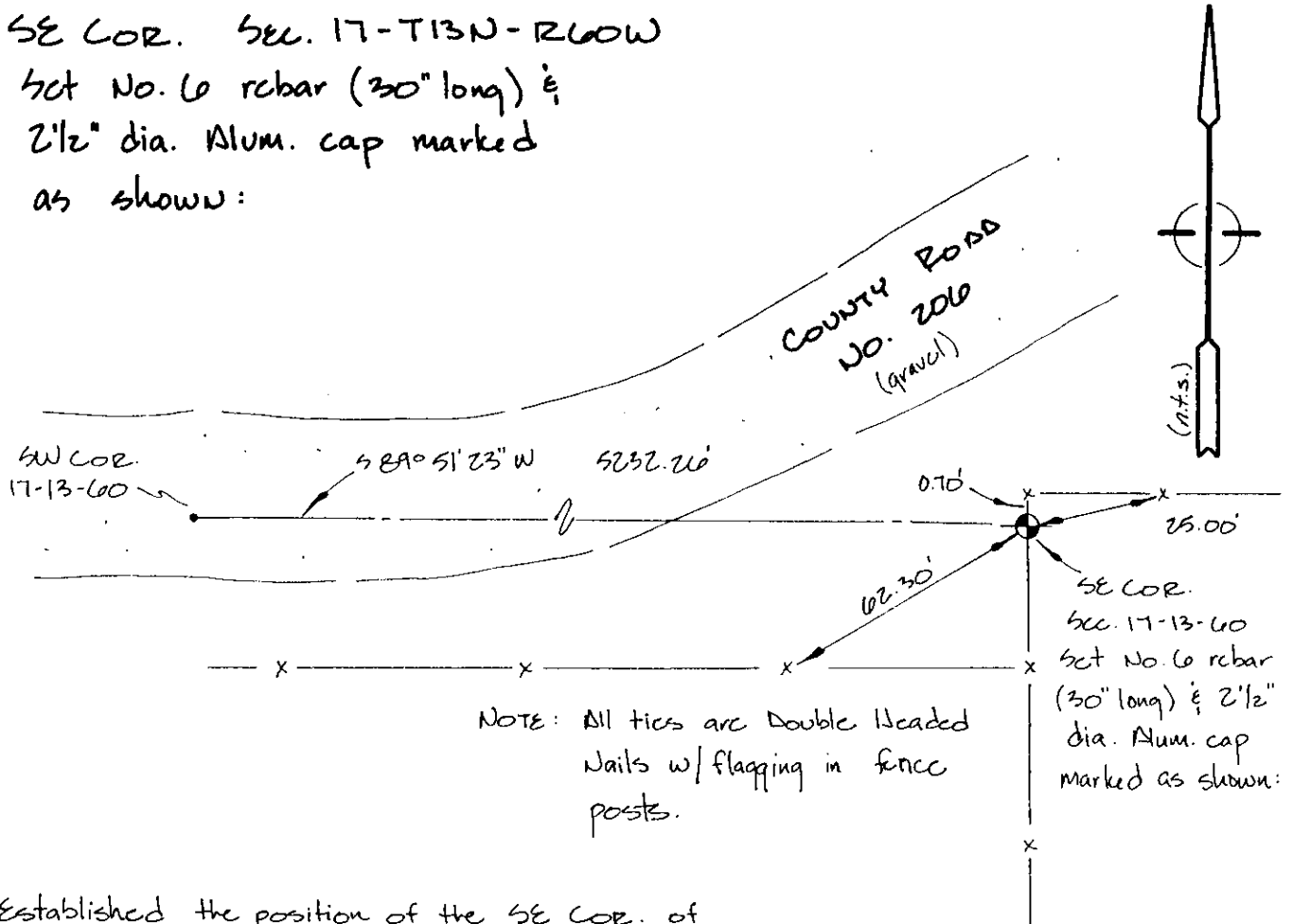
(In compliance with the CORNER PERPETUATION AND FILING ACT, Wyoming Statutes, 1977, Section 36-11-101, et. seq., and the Rules and Regulations of the Board of Registration for Professional Engineers and Professional Land Surveyors.)

Reverse side of this form may be used if more space is needed.

Record of original survey and citation of source of historical information (if corner is lost or obliterated). Description of corner monumentation evidence found and/or monument and accessories established to perpetuate the location of this corner. Sketch of relative location of monument, accessories, and reference points with course and distance to adjacent corner(s) (if determined in this survey). Method and rationale for reestablishment of lost or obliterated corner.

SE COR. SEC. 17-T13N-R60W

Set No. 6 rebar (30" long) \hat{e}
 2 1/2" dia. Alum. cap marked
 as shown:



NOTE: All ties are Double Headed Nails w/ flagging in fence posts.

Established the position of the SE COR. of Sec. 17-13-60 at the E prolongation of County Road No. 2006 (E-W) and the intersection of a N-S fence line. No evidence of original corner found.



162004

Date of Field Work: 4-12-95 Office Reference: _____

CROSS INDEX DIAGRAM

	2	3	4	5	6	7	8	9	10	11	12	13	14	15	16	17	18	19	20	21	22	23	24	25
A																								
B																								
C	6				5					4					3						2			
D																								
E																								
F																								
G																								
H																								
I																								
J																								
K																								
L																								
M																								
N																								
O																								
P																								
Q																								
R																								
S																								
T																								
U																								
V																								
W																								
X																								
Y																								
Z																								

Firm/Agency, Address
 PREPARED BY: _____
 This corner record was prepared by me or under my direction and supervision.

INTERMILL LAND SURVEYING, INC.
 1301 N. Cleveland Ave.
 Loveland, CO. 80537
 (970) 669-0516



1788

BOOK

1397

Corner Name: SE COR. 17-13-60 Section: 17 T13N R60W; 6th PM Cross Index No. N-9